



**The  
Children's  
Museum**  
OF SOUTHERN OREGON



# **A TRIP TO THE CHILDREN'S MUSEUM OF SOUTHERN OREGON**

*A SOCIAL STORY TO HELP PLAN YOUR VISIT*

## WELCOME TO THE CHILDREN'S MUSEUM OF SOUTHERN OREGON



**The Children's Museum is a big building surrounded by a tall black fence.**

- At The Museum I am able to look at, touch, and explore all the kid-friendly exhibits.
- I might get to see all of the exhibits and I might not. That is okay.
- At the Children's Museum there are rules to keep everyone SAFE. Here are some of our Rules:





## **The Children's Museum has a few rules to keep everyone safe.**

- Use walking feet
- Use an inside voice
- Stay with my grown-up
- Use gentle hands with friends and toys
- Clean up after myself
- Take turns and share
- Follow all posted signs and staff directions



## SPACES INCLUDE:

- Entrance
- Quiet Room
- Outdoor Adventure
- Lyn's Little Learners
- The Makery
- The Gathering Grove
- The Water Lab
- The Wind Lab
- The Light Lab
- Farm to Table
- Safe and Sound Medical Center
- Adventure Mountain
- The Lookout
- The Lumber Yard
- Wildlife Rescue
- Clay Studio
- Culinary Studio

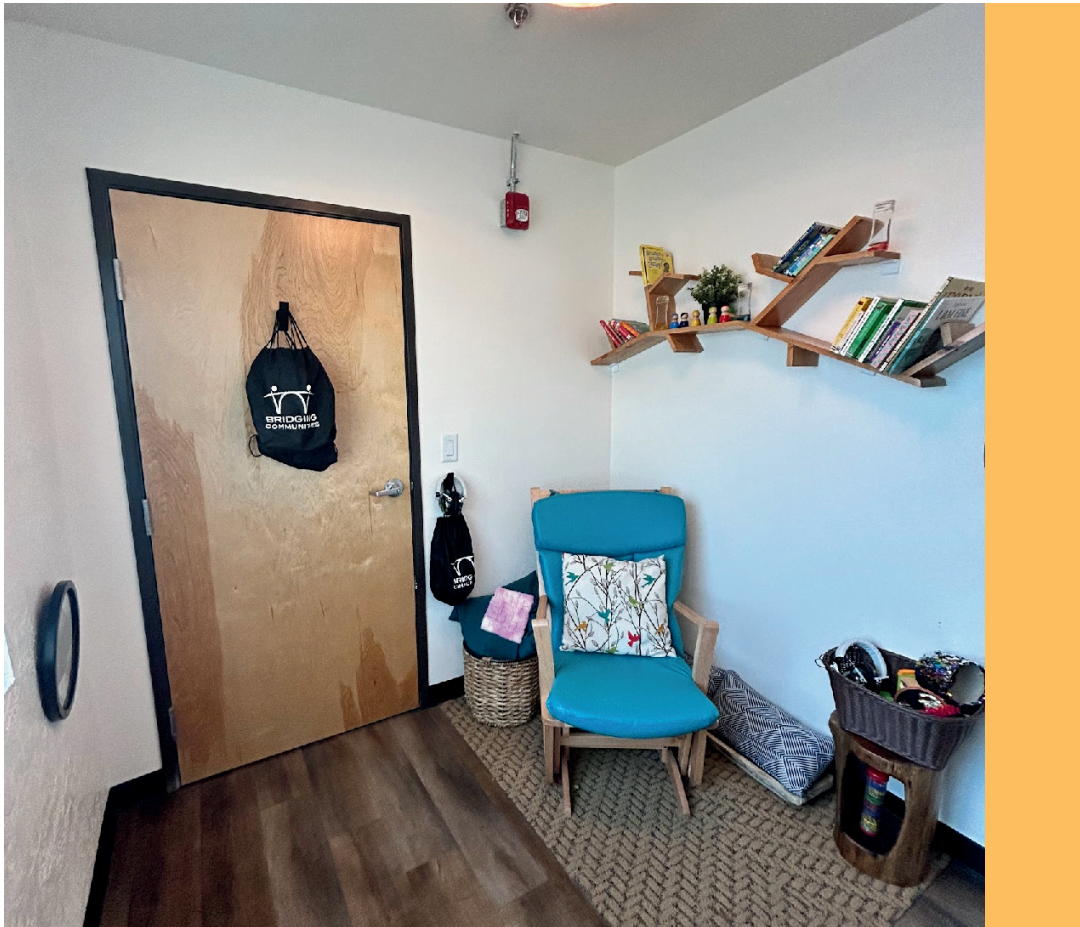




## ENTRANCE

**This is where my grow-up will check in and pay for my visit.**

- I may need to wait. That is okay.
- I can play with the magnet wall or look at a book while I wait for my turn.
- When it is my turn I will walk with my grown-up up the stairs to the museum.



## QUIET ROOM

- If I need a break I can go to the quiet room with my grown-up.
- I can pick a fidget, rock in the rocking chair, stomp on a tile, or wear headphones.
- When I feel ready I can keep exploring The Museum.





## OUTDOOR ADVENTURE

- Sometimes it can be hot or cold.
- Sometimes it is closed to keep me safe.
- I can run, ride a bike, climb and crawl.
- I can play musical instruments in the Sound Garden.
- I can play in the Tree House and go down the slide.
- I can play in the river or in the sand.
- I can build with blocks or sticks.



## **LYN'S LITTLE LEARNERS**

**Recommended for infants and children under 3 years old.**

**If my Grown-up says I can in this space:**

- I will take off my shoes.
- I can play gently with the blocks, puzzles and toys.
- I can touch and feel the sensory walls.
- I can pretend to cook in the kitchen.
- I can read a book.
- When I am done I will clean up.





## THE MAKERY

Every time I visit, the table's activities might be different.

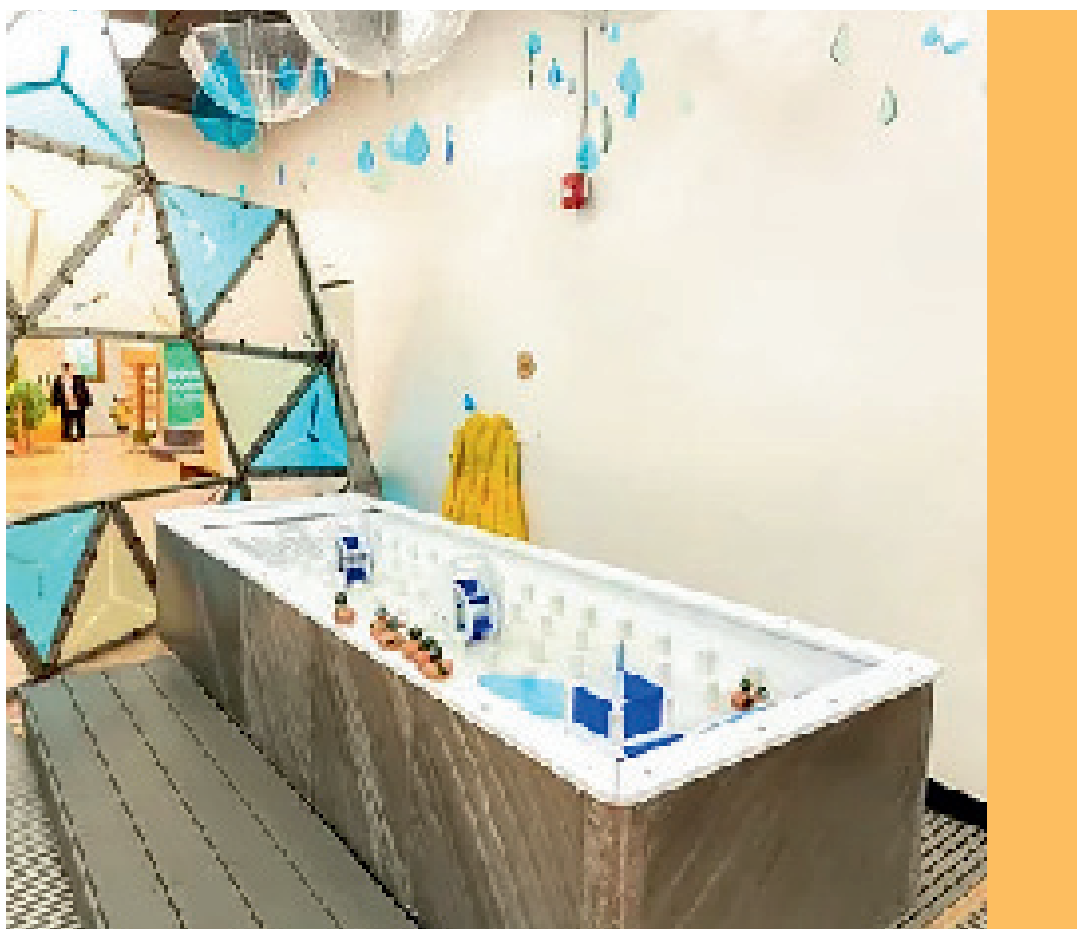
- I can ask The Makery Teacher “What can I create/play with today?”
- If I paint, I can leave my artwork to dry on a drying rack while I explore more of the museum.
- I can take the artwork home with me.
- Sometimes art or toys have to stay in The Makery, and that’s ok.
- When I am done I can clean up.



## THE GATHERING GROVE

- I can wear a costume or use a prop.
- I can dance, sing, or act.
- I can read a book on the steps.
- I can sit, balance and spin in a Gyro Chair.
- I will clean up when I am done.





## THE WATER LAB

- I might get wet.
- I can wear a smock to help keep me dry.
- There is a hand dryer that makes a loud noise.
- I can try and make the toys float.
- I can change the direction of the water.



## THE WIND LAB

- The wind lab can be loud.
- I can put balls in the Ball Wall and watch it go through the tubes.
- I can float a scarf on the Wind Tunnel.
- When I am done I can put the balls and scarves away.





## THE LIGHT LAB

- I can explore and manipulate light.
- I can make a design on the lightboard.
- I can look at myself in the light mirror.
- I can make light and sound by pressing the touch pads.



## FARM TO TABLE

- I can pretend to be a chef, farmer, or waiter.
- I can pretend to make food.
- I can wear an apron or chef's hat.
- When I am done I will put the food away.





## SAFE AND SOUND MEDICAL CENTER

- I can pretend to be a Doctor, Dentist, Paramedic, or Patient.
- I can take care of a baby, a stuffed animal, or a person.
- I can wear a Doctor's coat or medical scrubs.
- And when I am done I will clean up.



## ADVENTURE MOUNTAIN

- I will take my shoes off to play.
- I can climb the walls.
- I can jump on the mats.
- I can play games with friends in this area.
- I will play in a way that keeps myself and those around me safe.





## THE LOOKOUT

- I can pretend to be a Fire Watcher, a Park Ranger or a Fire Dispatcher.
- I can wear a vest, pretend to live in the watch tower or learn more about animals.
- When I am done I will clean up.



## THE LUMBER YARD

- I can pretend to be a Mill Worker, a Builder, or a Forman.
- I can wear a vest, or a tool belt.
- I can build with the big blocks or small blacks.
- I can use the tools or look at a book.
- When I am done I will clean up.





## WILDLIFE RESCUE

- I can be a Forest Ranger, or a Wildlife Veterinarian.
- I can wear a vest.
- I can take pretend to feed or take care of the animals.
- I can help them rehab on the obstacle course.
- I can go down the slide
- When I am done I will clean up.



## CULINARY STUDIO

- This is where they have classes I can go to with my grown-up.
- There will be a Teacher that gives me instructions and tells me what to do
- I might get to touch or taste food.
- Sometime I will work with something that is hot or sharp.
- I need to be careful and listen to the grown-ups so everyone is safe.



## CLAY STUDIO

- Here I can make something new out of clay or paint something that is already been made.
- Sometimes when I play with clay I will not take what I make home.
- When I paint clay it has to stay in the clay studio to dry. I can come back and get it on a different day.
- I have to move carefully at the Clay Studio to keep the art and people safe.





## **SEE YOU SOON!**

- When it's time to leave the museum, my grown-up will tell me.
- It was a great day at The Children's Museum of Southern Oregon.